



NORDIC CCM0630 SERIES

MODULAR CUBED ICE MAKER



Ice maker shown on B530SS bin

FEATURES:

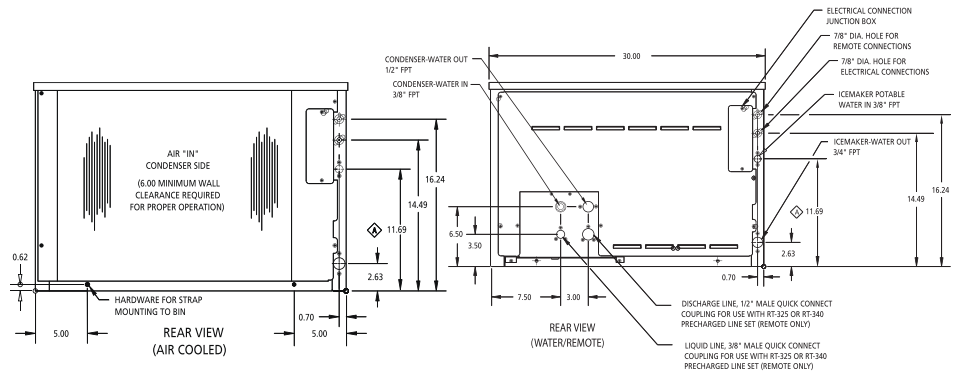
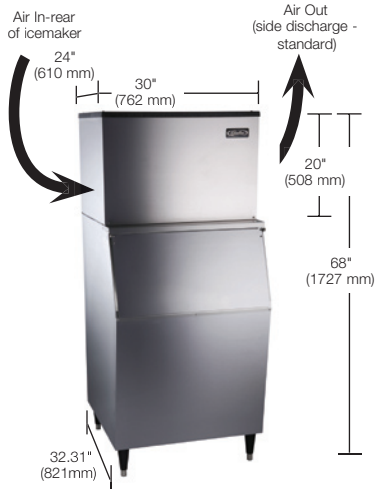
- Produces up to 652 lbs. (296 Kgs.) of ice per day
- Constructed from corrosion-resistant stainless steel
- Built in Agion Antimicrobial product protection effective against mold, mildew and fungus
- Ultra-low profile – only 20 inches (508 mm) tall
- Harvest assist reduces utility consumption
- Choice of full or half cube size
- No air filter to clean or replace

Protected by Agion



Nature's antimicrobial

Dimensions and Air Flow



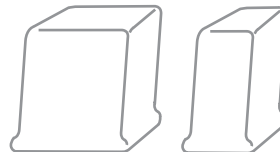
OPERATING LIMITS

Ambient Temp. Range Air & Water	50° - 110°F (10° - 43°C)
Water Temp. Range	40° - 110°F (4.5° - 43°C)
Water Pressure Ice Maker Water in	Min. 20 psi (1.4 bar)
	Max. 60 psi (4.1 bar)
Condenser Inlet Water (Water cooled only)	Min. 20 psi (1.4 bar)
	Max. 60 psi (4.1 bar)

MODEL NO.	Cond. Unit	Ice Prod. per 24 hrs. at 70° Air / 50° Water lbs. (Kgs.)	Ice Prod. per 24 hrs. at 90° Air / 70° Water lbs. (Kgs.)	Water Used-Gals. (Ltrs.) per 100 lbs. of ice 90° Air / 70° Water		Kilowatts Used per 100 lbs. of ice 90° Air / 70° Water	Heat Rejection (Btuh)	Electrical Rating	Min. Circuit Amp.	Fuse Size
				Ice Prod. Use	Cond. Use					
CCM0630A*2	Air	636 (289)	459 (209)	22.0	n/a	5.8	9523	230/60/1	9.9	16
CCM0630W*2	Water	609 (277)	523 (238)	24.3	114	4.6	9684	230/60/1	7.4	16
CCM0630R*2	Remote	555 (252)	474 (215)	27.9	n/a	6.2	10138	230/60/1	10.3	16
CCM0630A*5	Air	652 (296)	506 (230)	25.2	n/a	5.9	10566	208-230/50/1	11.5	15
CCM0630W*5	Water	619 (281)	576 (262)	29.0	148	4.7	10767	208-230/50/1	8.7	15
CCM0630R*5	Remote	605 (275)	502 (228)	24.9	n/a	6.3	10850	208-230/50/1	12.9	15

MODEL NO.	Description	Shipping Weight lbs. (Kgs.)
RC06002	Remote Condenser for 1 model CCM0630R (208-230/50-60/1 voltage)	95 (43)
RT25	25 ft. (7.6m) Precharged tubing Kit for R-404A models	13 (6)
RT40	40 ft. (12m) Precharged tubing Kit for R-404A models	18 (8)
RT60	60 ft. (18.2m) Precharged tubing Kit for R-404A models	26 (12)

See Bin specification sheet for information on Storage bins.
 • Represents cube size. For full cube substitute an "F", for half cube substitute an "h".
 Please note: air-cooled units require 6" (152 mm) clearance for air intake and exhaust.



NUMBER OF WIRES 3
 SHIPPING WEIGHT LBS (KGS.) . . 150 (68) - 175 (80)

Cube Size:	Width	Depth	Height
Full	7/8" (22mm)	7/8" (22mm)	7/8" (22mm)
Half	3/8" (10mm)	7/8" (22mm)	7/8" (22mm)

AGENCY LISTINGS LISTED

